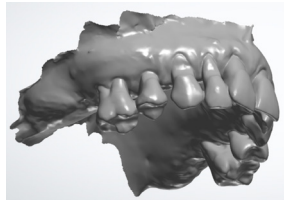


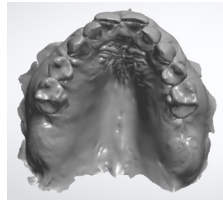
IMMEDIATE DENTURE SCANNING

A digital immediate denture requires certain data in order to design and produce:

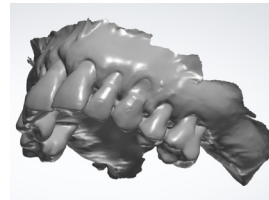
A preparation scan capturing as much of the sulcus and/palette as possible



Preparation scan, full depth to the sulcus and behind the tuberosity

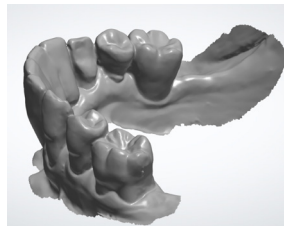


Palatal scan capturing vibrating line and Fovea Palatina

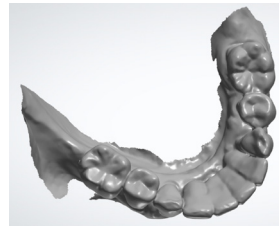


Preparation scan, full depth to the sulcus and behind the tuberosity

An antagonist or opposing preparation scan



Clear scan of opposing arch

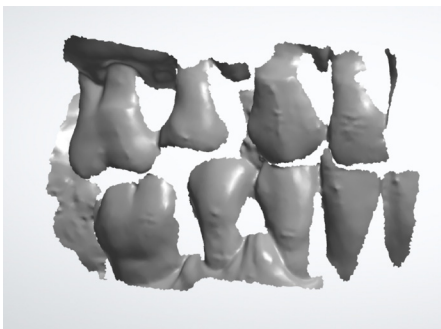


Clear scan of occlusal table

A Bite scan

If there are no posterior stops a scan with bite material may be required to make sure the correct vertical is established.

A bite scan is required because when the scan is converted to an STL file it loses its orientation and may need to be realigned.



A clear bite scan with minimal points of reference for alignment are required. An anterior section is usually best.

A snapshot of the alignment process

