

Reliable Testing for Your Practice with Pathology Services

Physician-owned laboratory providing comprehensive pathology services by board-certified and fellowship-trained physicians



About D-PATH Dermatopathology

Central location near the FedEx world headquarters provides 48 hour turnaround time on the majority of results.

Customized diagnostic summary reports are available in your preferred format with photo availability.

Participating provider for all of the major US health plans.



“Flagged” reports to highlight malignant or other critical results

In-house second opinion and expert consultation is just one example of commitment to quality, service, and innovation!

Discover. Connect. Transform.

The products and services described in this advertisement and claims regarding those products and services are provided by third parties. Henry Schein, Inc. and its affiliated companies are not responsible for, and expressly disclaim all liability for damages of any kind arising out of such third party products and/or services. Henry Schein receives a marketing fee from its solutions providers for products and/or services purchased.

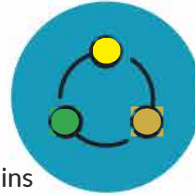
How D-PATH Services Your Dermatology Practice



Testing

Internal review of all melanomas and unusual cases

- In-house hematopathology work-up on lymphomas
- Comprehensive menu of IHC and special stains
- Immunofluorescence testing
- Customized diagnostic report formats
- Flexible TC/PC business model arrangements
- DecisionDx-melanoma prognostic testing for melanoma cases



Solutions for Connectivity

D-PATH offers the broadest range of connectivity solutions in the laboratory industry. Whatever your requirements for requisition creation and report delivery, we deliver platforms that interface seamlessly with most leading EMRs.



Laboratory Medicine Expertise

Our fellowship-trained and sub-specialized pathology team focuses exclusively on specific diseases and conditions, delivering the highest level of diagnostic excellence to clinicians and their patients.



Compliance Assured

D-PATH is fully accredited by the College of American Pathologists, and licensed by CLIA, and the states of California, Florida, Maryland, New York, Pennsylvania and Rhode Island. In addition, we strictly adhere to all HIPAA regulations.

Specialized Pathology Services



Discover. Connect. Transform.

Learn more about Henry Schein's solutions provider by calling your local representative or visiting [HenryScheinSolutionsHub.com](https://www.HenryScheinSolutionsHub.com).

