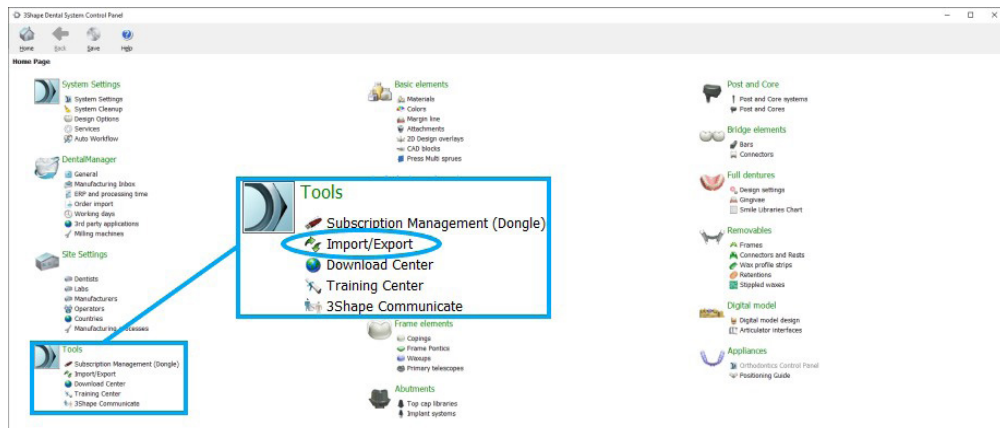


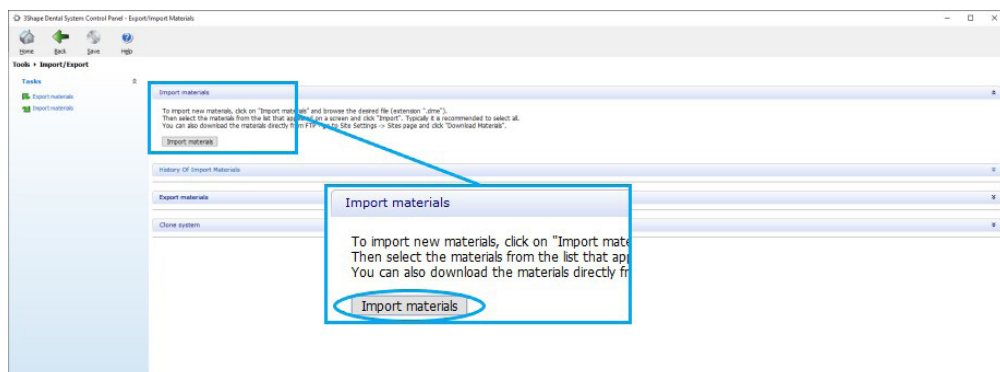
How To Import Implant Libraries from Downloaded DME Files in 3Shape Dental Systems Control Panel

1. Download the Implant library from www.zahndental.com/dess

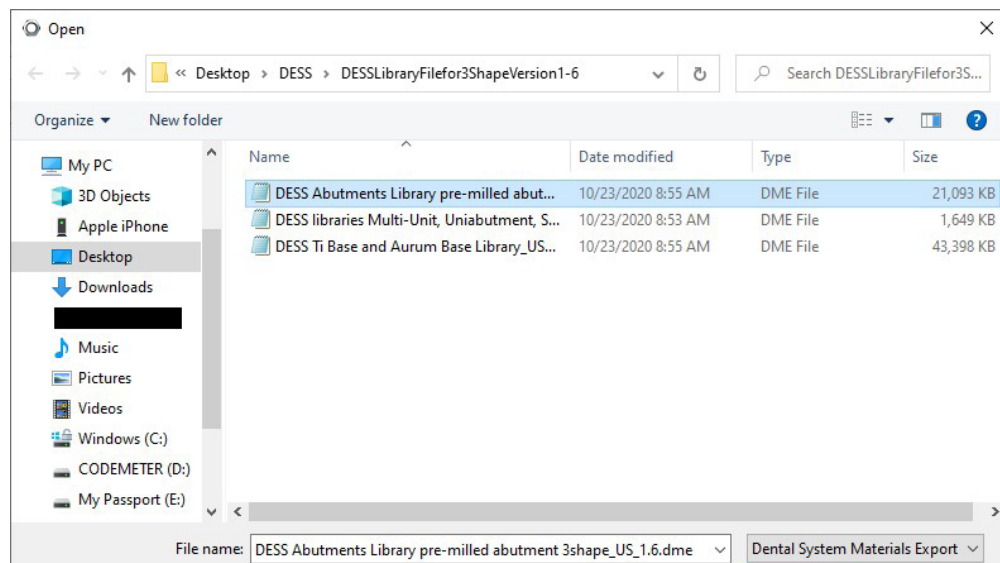
2. Open 3Shape Dental System Control Panel and click import/export under tools section



3. Click import materials



4. Navigate to location on your PC where the library is stored, select the library to import and click open



5. Click import

Import and update materials

Please select materials to import

Available materials
Implant systems

Library name
DESS premilled

Provider
DESS

Library type
Implant library

Version

Library creation date
9/28/2020

Description

Import Cancel

6. Click OK

Information

Materials have been imported successfully

OK

7. Repeat for any other available libraries

8. Close 3Shape Dental System Control Panel and click yes to confirm save

Confirm save

Confirm save
Save changes before closing?

Yes No Cancel